

CERTIFICATE OF LOCATION OF GOVERNMENT CORNER

SOUTH 1/4 Corner of Section 15, Township 106, Range 43, 5th P.M.

STATE OF MINNESOTA, County of MURRAY

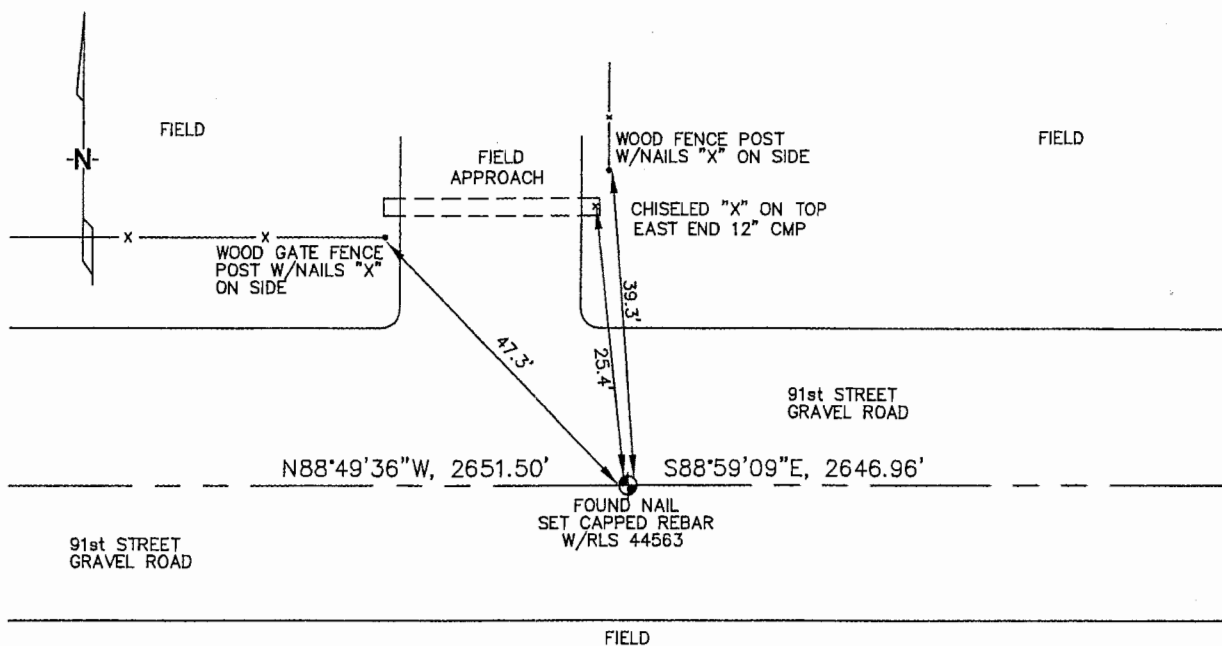
At the corner location shown on the sketch :

On 3/22/2006 found NAIL IN GRAVEL ROAD.

left monument as found, lowered monument, removed monument (explain)

On 3/22/2006 set 5/8" REBAR WITH CAP: RLS 44563.

Sketch of reference ties



N: 691,369.36
E: 2,099,874.71

MN SOUTH ZONE, NAD 83

Statement of evidence relative to this corner location is on back page

I hereby certify that this document and the data contained herein was prepared by me or under my direct supervision.

James V. Johnson
Signature

4/24/06
Date

Registration No. 44563

Land Surveyor, Professional Engineer

County Surveyor, County Engineer

OFFICE OF THE COUNTY RECORDER

County of _____

SEP 28 2006

I hereby certify that this document was filed in the Co. Recorders office at _____ .M. on the _____ day of _____ A.D., 20

County Recorder James V. Johnson
By _____, Deputy

DOCUMENT NO. _____

STATEMENT OF EVIDENCE:

SOUTH 1/4 CORNER, SECTION 15, T. 106 N., R. 43 W.,
MURRAY COUNTY, MINNESOTA

1866 J.W. BISHOP, US DEPUTY SURVEYOR, MONUMENTED CORNER.

3/22/2006 WATEIG ENGINEERS, INC. SURVEY CREW, BRIAN PAYNE
PARTY CHIEF FOUND NAIL IN GRAVEL ROAD
OPPOSITE A FENCE LINE RUNNING NORTH.
REPLACED NAIL W/ 5/8" REBAR W/ CAP: KLS
44563

TIES: 47.3' NW, TO WOOD, GATE FENCE POST
WITH NAILED "X" ON SIDE OF POST.

N-25.4' TO CHISELED "X" ON TOP, E.
END OF 12" C.M.P.

N-39.3' TO WOOD, FENCE POST WITH
NAILED "X" ON SIDE OF POST.

E-2646.96' TO SE CORNER, SEC. 15.

W-2651.50' TO SW CORNER, SEC. 15.